

Meet Today's Webinar Team



Presenter: Laurelle Bednar

Laurelle is a training consultant for Texas Mutual's safety services department. She conducts webinars, presentations and creates e-Learning content for our policyholders and internal departments. Laurelle holds a bachelor's and master's degree in anthropology from California State University Fullerton.



Presenter: Josh White

Josh is a safety services representative for Texas Mutual's safety services support center. He conducts virtual, telephonic safety surveys with our small business owners to help provide guidance in their workplace safety efforts. Josh joined the safety services support center in early 2016 and has been doing his part to keep Texas safe by offering his expertise to our policyholders.



Moderator: Hannah Bolton

Hannah is a safety services representative for Texas Mutual's safety services support center. She conducts phone surveys, internal support for the safety services department, and provides policyholder services by providing guidance in their safety endeavors. Hannah has a degree in Communications from Texas A & M University, Corpus Christi.

Weathering the storm!

TexasMutual[®]
WORKERS' COMPENSATION INSURANCE
WORK SAFE, TEXASSM



Agenda



Weather in
Texas



Safety and
survival



Planning
ahead

Agenda

Weather in
Texas

Safety and
survival

Planning
ahead

Agenda

Weather in
Texas

Safety and
survival

Planning
ahead




Weather

TexasMutual[®]
WORKERS' COMPENSATION INSURANCE
WORK SAFE, TEXASSM





A satellite image of a hurricane, showing a distinct eye and spiral cloud bands. The image is in shades of blue and white, with the hurricane's structure clearly visible against the surrounding cloud cover.

AccuWeather Forecast

Tropical Storms: 12-15

Hurricanes: 6-8

Major Hurricanes: 3-5

U.S. Named Storm Landfalls: 3-4

What is
severe
weather



Climatology



ANDREW ELWIDGE

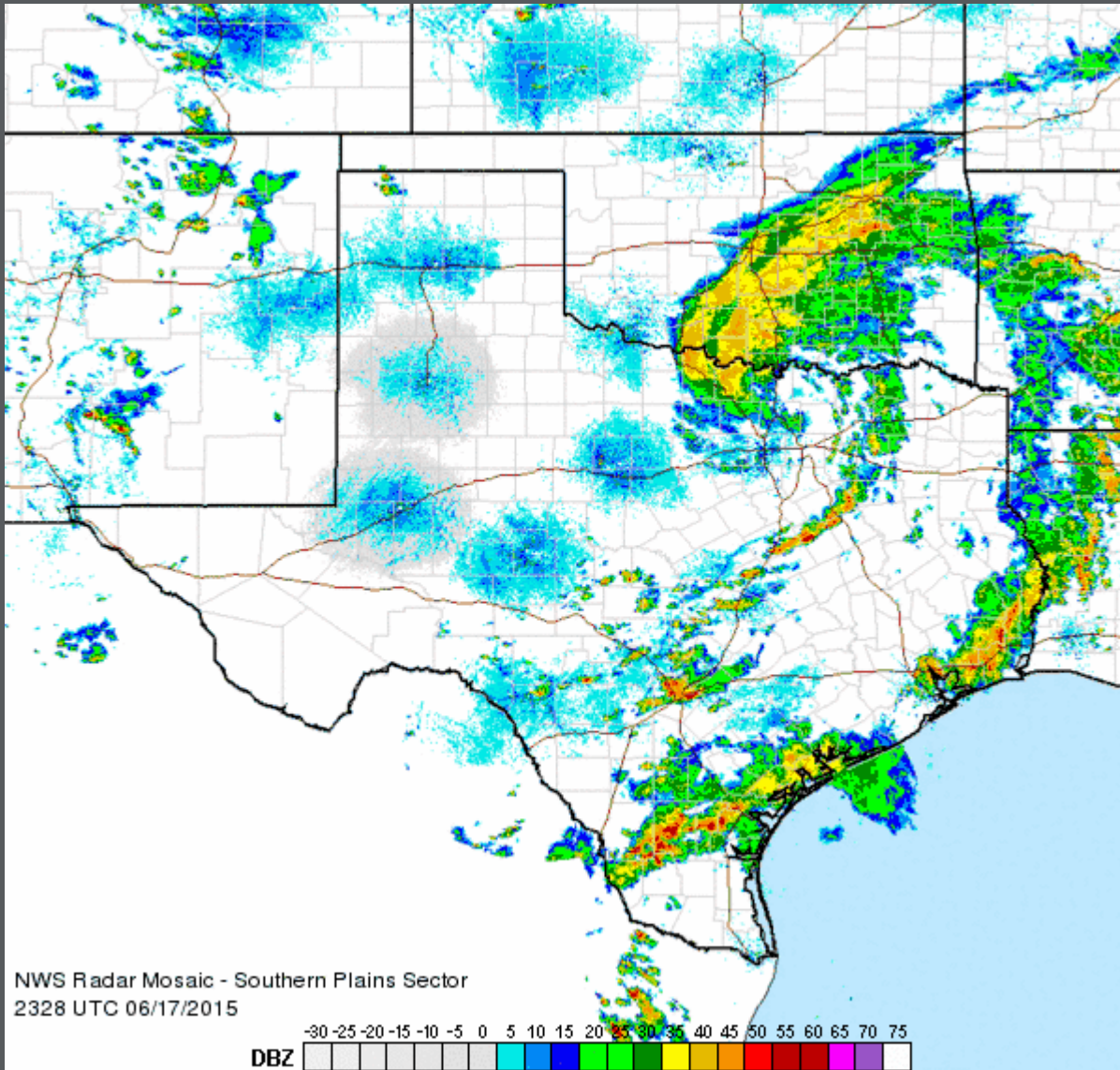
Expect the
unexpected



What does it mean?

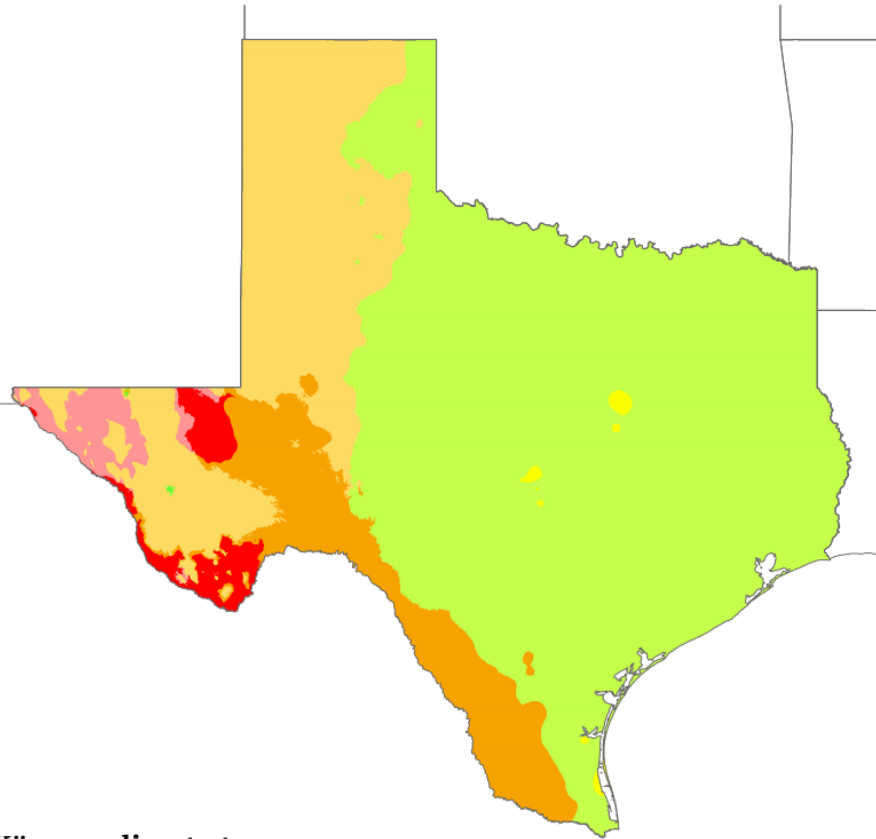
Warning	Watch	Advisory	Outlook
Weather hazard is occurring, imminent or likely	Risk of weather hazard in the near future	Weather hazard is occurring, imminent or likely	Risk of weather hazard in the next 7 days
Poses a threat to life/property	Could pose a threat to life/property	Could cause significant inconvenience	Could pose a threat to life/property
Take Protective Action	Have a Plan of Action	Use Caution	Prepare a Plan of Action

Severe
weather
terminology



Texas
weather

Köppen climate types of Texas



Köppen climate type

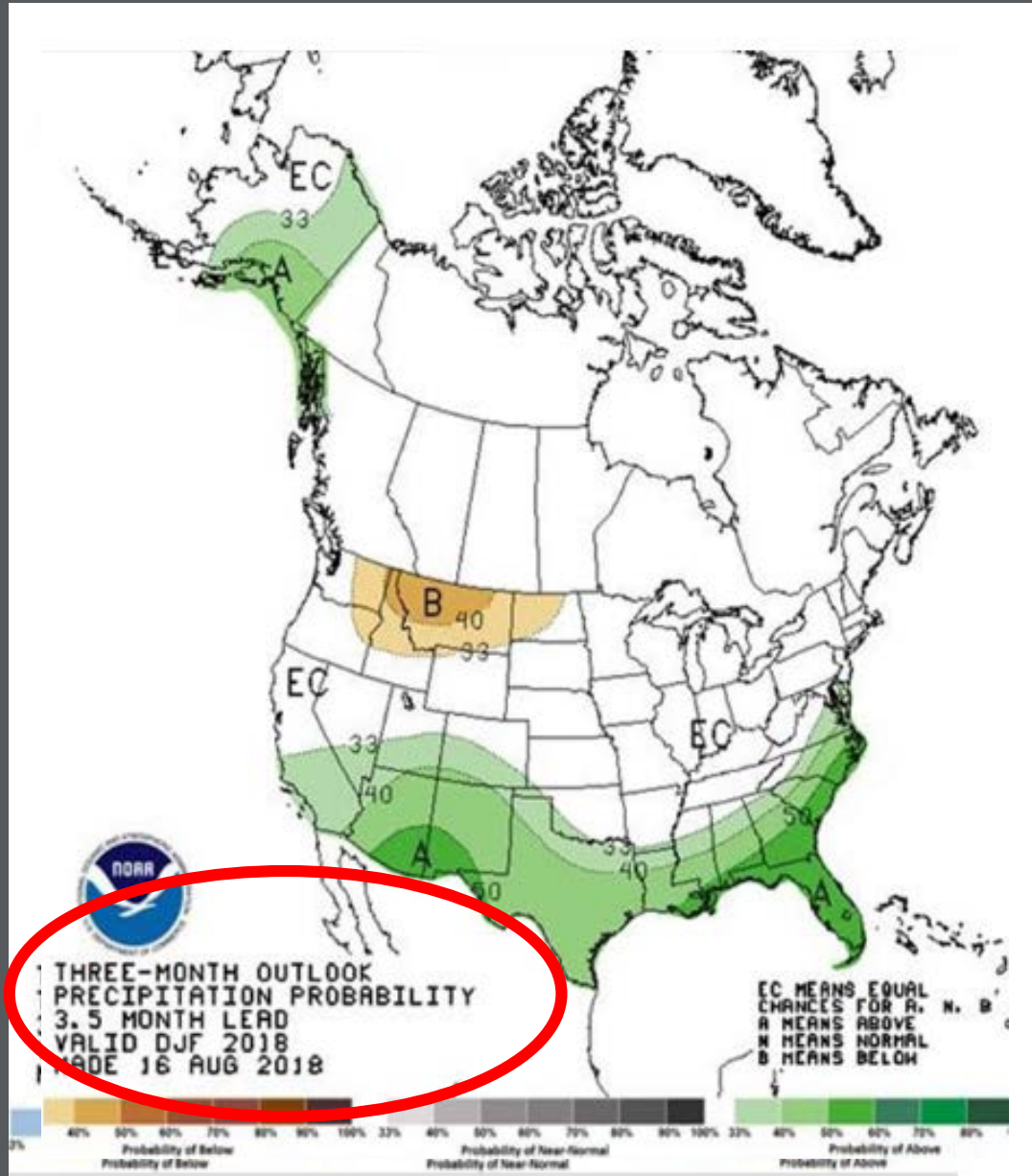
Cfb (Oceanic)	Csa (Hot-summer mediterranean)	BWk (Cold desert)
Cfa (Humid subtropical)	BSk (Cold semi-arid)	BWh (Hot desert)
Csb (Warm-summer mediterranean)	BSh (Hot semi-arid)	

*Isotherm used to distinguish temperate (C) and continental (D) climates is -3°C

Data sources: Köppen types calculated from data from PRISM Climate Group, Oregon State University, <http://prism.oregonstate.edu>;
Outline map from US Census Bureau

Texas
climate type

NOAA's three-month Texas weather outlook





Risks



Risks for
your
business

DON'T WAIT. COMMUNICATE.
MAKE YOUR EMERGENCY PLAN TODAY.



SEPTEMBER IS NATIONAL PREPAREDNESS MONTH!



AMERICA'S
PrepareAthon!



National Preparedness Month

TexasMutual[®]

WORKERS' COMPENSATION INSURANCE

WORK SAFE, TEXASSM



Theme for
2018

NATIONAL PREPAREDNESS MONTH 2018



Disasters Happen

PREPARE NOW

LEARN HOW



FEMA

Ready. 

Week one

FILL OUT AN EMERGENCY COMMUNICATIONS PLAN.



#BeInformed

Ready 

Week two

NATURAL GAS KEEPS YOU WARM, BUT IT CAN ALSO CAUSE HARM.

KNOW HOW
TO SHUT OFF
THE GAS



IMMEDIATELY GO
OUTSIDE AND CALL 911
IF THERE IS A LEAK



HAVE NATURAL
GAS DETECTORS
ON EVERY FLOOR



Ready 

Week three

THE COST OF
**FLOOD
INSURANCE**
IS A DROP IN
THE BUCKET
COMPARED TO
THE COST OF
**FLOOD
DAMAGE**

\$700/YEAR
AVERAGE FLOOD
INSURANCE POLICY

\$43,000
AVERAGE FLOOD
INSURANCE CLAIM

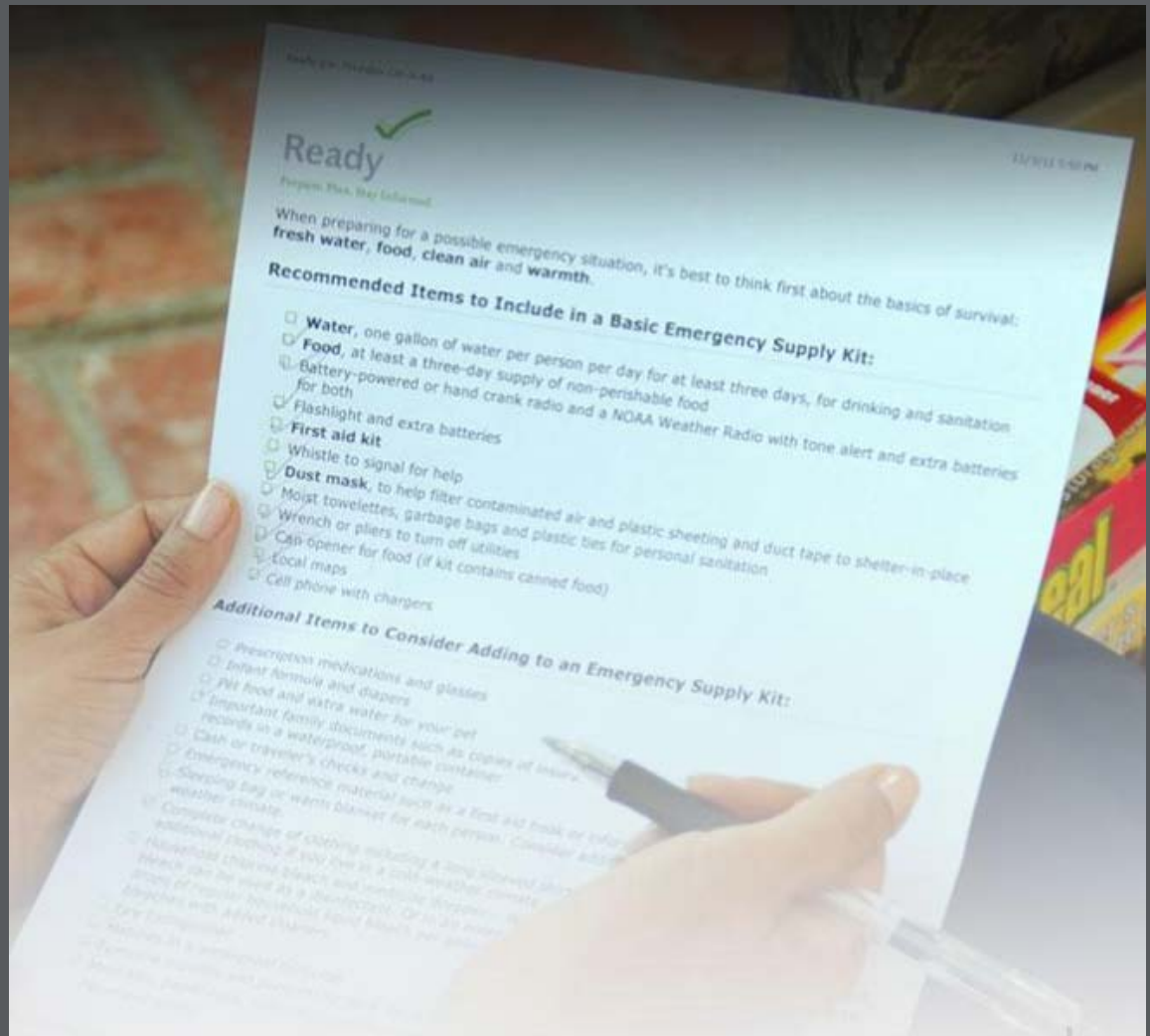


FEMA

Week four



National day of action





Planning ahead

TexasMutual[®]
WORKERS' COMPENSATION INSURANCE
WORK SAFE, TEXASSM



Concerns when a storm is looming



Assessing risks



Review emergency action plan



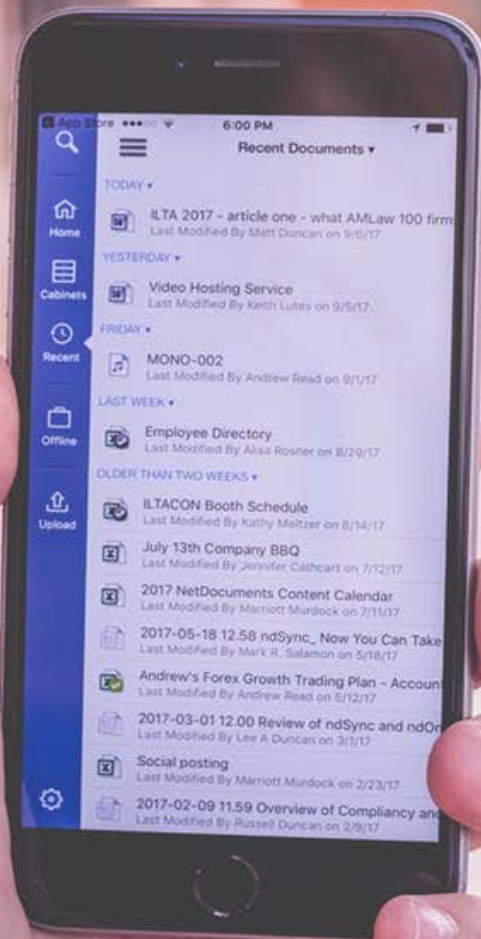
Hold practice drills



Prepare employees



Review and test communication plan



App Store 6:00 PM Recent Documents

TODAY

- ILTA 2017 - article one - what AMLaw 100 firms
Last Modified By Matt Duncan on 9/5/17

YESTERDAY

- Video Hosting Service
Last Modified By Keith Lutes on 9/5/17

FRIDAY

- MONO-002
Last Modified By Andrew Read on 9/1/17

LAST WEEK

- Employee Directory
Last Modified By Alisa Rosner on 8/29/17

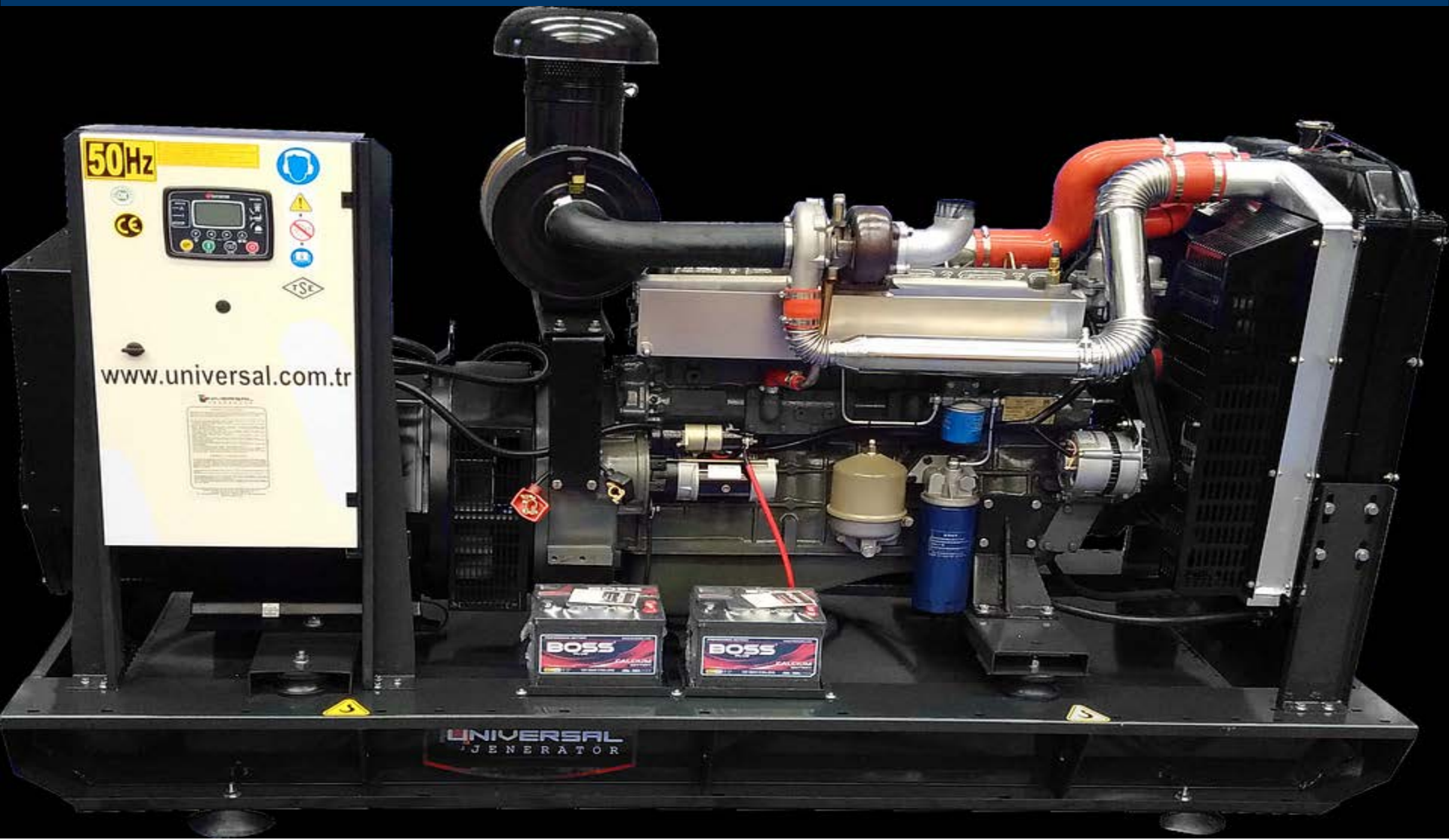
OLDER THAN TWO WEEKS

- ILTACON Booth Schedule
Last Modified By Kathy Maltzer on 8/14/17
- July 13th Company BBQ
Last Modified By Jennifer Cathcart on 7/12/17
- 2017 NetDocuments Content Calendar
Last Modified By Marriott Murdock on 7/11/17
- 2017-05-18 12:58 ndSync_ Now You Can Take
Last Modified By Mark R. Salamon on 5/18/17
- Andrew's Forex Growth Trading Plan - Account
Last Modified By Andrew Read on 5/12/17
- 2017-03-01 12:00 Review of ndSync and ndOn
Last Modified By Lee A Duncan on 3/1/17
- Social posting
Last Modified By Marriott Murdock on 2/23/17
- 2017-02-09 11:59 Overview of Compliancy and
Last Modified By Russell Duncan on 2/9/17

Check emergency kits



Get supplies ready



Prepare facilities



Stay informed





Safety and survival

TexasMutual[®]
WORKERS' COMPENSATION INSURANCE
WORK SAFE, TEXASSM



Forecasts



Weathering the storm



In a
thunderstorm



Flood safety



In a tornado



In a hurricane



Snow and ice





<https://www.weather.gov/safety/>

<https://www.ready.gov/severe-weather>

<https://msc.fema.gov/portal/home>

<https://www.nfpa.org/Public-Education/By-topic/Emergency-Preparedness/Natural-disasters/Severe-storms>

<https://dps.mn.gov/divisions/hsem/weather-awareness-preparedness/Pages/severe-weather.aspx>

Summary



Prevalent
weather
conditions



Safety tips



Planning
ahead

Summary

Prevalent
weather
conditions

Safety tips

Planning
ahead

Summary

Prevalent
weather
conditions

Safety tips

Planning
ahead



TexasMutual[®]
WORKERS' COMPENSATION INSURANCE
WORK SAFE, TEXASSM



Thank You

TexasMutual[®]
WORKERS' COMPENSATION INSURANCE
WORK SAFE, TEXASSM

